



Commercial



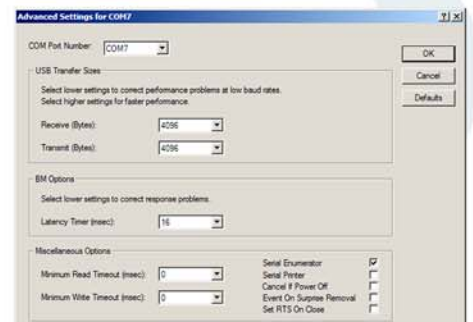
USBCom Family

Features

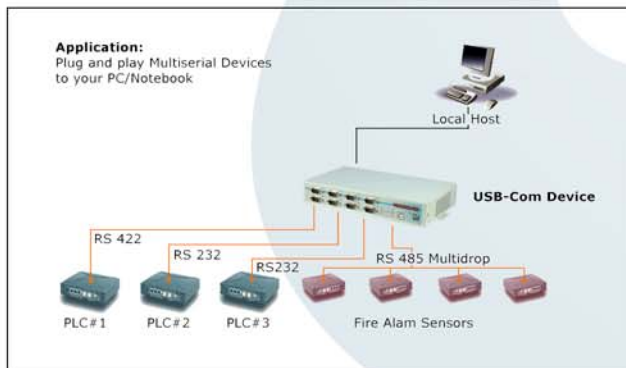
- 1 to 8 RS 232 serial ports via USB
- Hot plug and play
- Supports USB 2.0 and USB 1.1
- Speed up to 921 kbps
- UART has 128 Byte FIFO
- No IRQ & I/O port resources required
- Drivers for Win2003/XP/2000, Win 98SE, Mac OSx and Linux
- Non-standard baudrates available
- Full RS232 modem control signals

Introduction

USBCom adapters enable you to add serial COM ports to your PC-workstation, Notebook or Embedded Systems, providing the ability to communicate over USB (Universal Serial Bus) port with serial peripherals. They add Windows serial COM ports via USB connection and are compatible with the new Windows and legacy RS232 devices. This USB solution is perfect for all applications requiring additional RS232 serial devices. The plug and play USB port allows easy serial port expansion that requires no IRQ, DMA or I/O port resources. Users no longer need to power down the system and to open the case, saving setup time and costs. The commercial USBCom family supports full RS232 modem data and control signals and has standard DB9 male connectors. USBCom family has small, light and dense plastic cases suitable to be used together with mobile or portable devices. Easy to install drivers for all Windows operating systems make USBCom to high performance commercial devices.



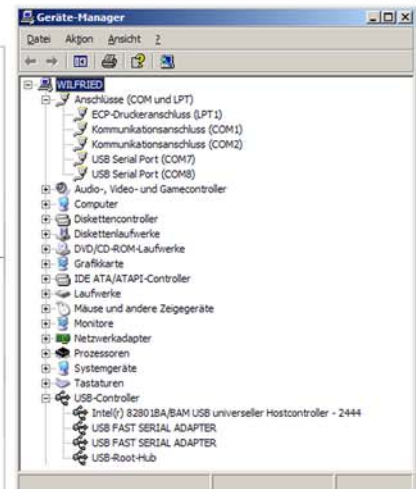
Rich Driver Configuration



Applications

You may either carry the USB-COM device with your mobile computer and connect the serial cables where you need to, or you may place the USB-COM device at the installer target and only carry your mobile PC. Connect the USB cable and the serial ports are detected.



Available models


USB-Com in Device Manager

Specifications

| | |
|--|---|
| USB | |
| Connector | USB Type B |
| Speed | Full speed 12 Mbps |
| Interface | RS232: TxD, RxD, RTS, CTS, DTR, DSR, DCD, RI, GND |
| Connector | DB9 male |
| FIFO | 128/384 bytes per port |
| Serial Communication Parameters | |
| Parity | None, Even, Odd |
| Data bits | 7,8 |
| Stop bits | 1,2 |
| Flow control | RTS/CTS |
| Speed | 180 bps up to 921 kbps |
| Mechanical Specifications | |
| Material | ABS |
| Environmental | |
| Operating Temperature | 0~60 degree C |
| Storage Temperature | -20~85 degree C |
| Approvals | |
| EMC | FCC Class A, CE Class A |
| Operating Systems | |
| Windows | 2003/XP/2000/9x |
| Other | Linux, Mac OSx |

Available models

| | RS232 | R422/485 | RS422/485 isolated |
|-----------------------|----------------------|----------------------|-----------------------|
| 1 Port Devices | | | |
| Product name | USB-COM | USB-COMi | USB-COMi-Si |
| Power requirements | 5V USB powered | 5V USB powered | 5V USB powered |
| Power consumption | 100mA @ 5V | 100mA @ 5V | 100mA @ 5V |
| Power supply adapter | none | none | none |
| Dimensions (WxLxH) | 39x66x20 | 72x68x40 | 72x86x40 |
| Isolation | none | none | 2KV optical isolation |
| LEDs | Tx, Rx | none | none |
| 2 Port Devices | | | |
| Product name | USB-2COM | USB-2COMi | USB-2COMi-Si |
| Power requirements | 5V USB powered | 5V external power | 5V external power |
| Power consumption | 250mA @ 5V | 250mA @ 5V | 250mA @ 5V |
| Power supply adapter | none | 5V @ 1600mA | 5V @ 1600mA |
| Dimensions (WxLxH) | 72x86x40 | 126x132x42 | 126x132x42 |
| Isolation | none | none | 2KV optical isolation |
| LEDs | none | Tx, Rx for each port | Tx, Rx for each port |
| 4 Port Devices | | | |
| Product name | USB-4COM | USB-4COMi | |
| Power requirements | 5V external power | 5V external power | |
| Power consumption | 450mA @ 5V | 450mA @ 5V | |
| Power supply adapter | 5V @ 1600mA | 5V @ 1600mA | |
| Dimensions (WxLxH) | 126x132x42 | 126x132x42 | |
| Isolation | none | none | |
| LEDs | Tx, Rx for each port | Tx, Rx for each port | |
| 8 Port Devices | | | |
| Product name | USB-8COM | | |
| Power requirements | 5V external power | | |
| Power consumption | 1000mA @ 5V | | |
| Power supply adapter | 5V @ 1600mA | | |
| Dimensions (WxLxH) | 126x132x42 | | |
| Isolation | none | | |
| LEDs | Tx, Rx for each port | | |